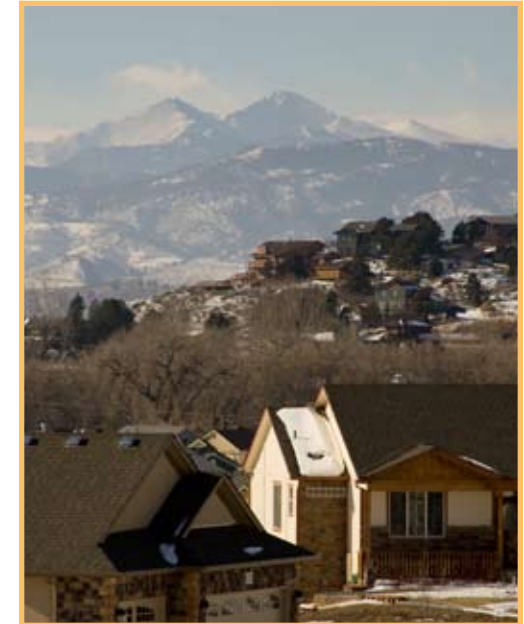


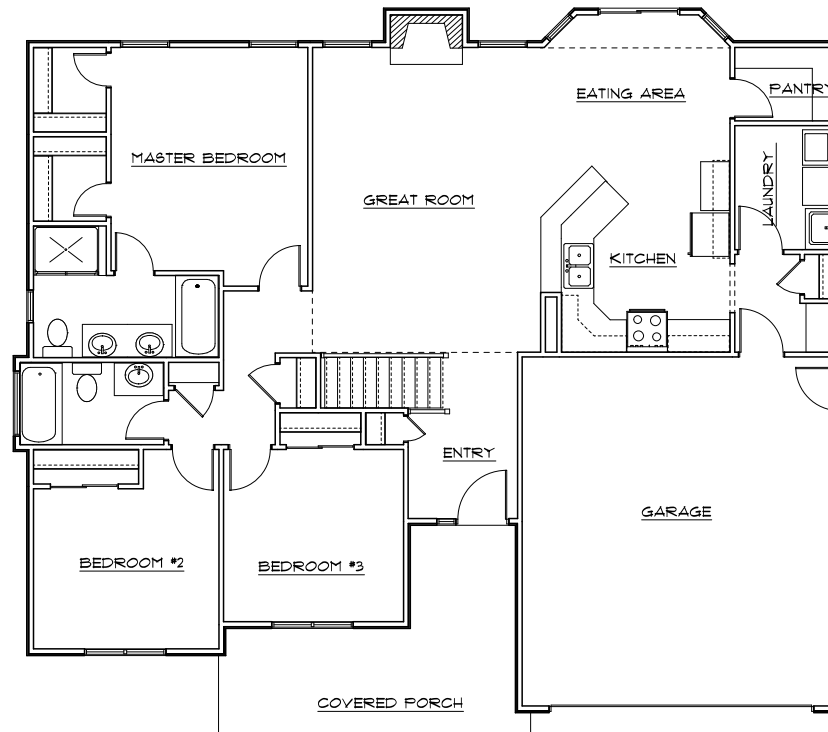
THE ADAMS - THE SIGNATURE SERIES - MEADOWBROOK RIDGE



MEADOWBROOK RIDGE

Standard Features

- 1,475 Finished Sq. ft
- Full Unfinished Basement
- 3 Bedrooms
- 2 Bathrooms
- Large Kitchen with Breakfast Bar
- Large Walk-in Pantry
- 5 Piece Master Bath
- Double Walk-in Closets in Master Suite
- Optional 3-Car Attached Garage
- Covered Front Entry



RUSS SPRAGUE

970.227.2699

e: russ@russprague.com

BOB GOLBA

970.581.8551

e: bobgolba@realtor.com



2175 Rio Blanco Dr., Loveland, Co 80538

Office: 970.797.9225

Meadowbrookridge.com